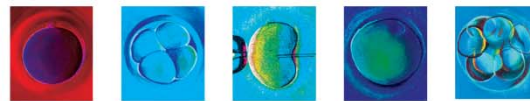


Louis Weckstein, MD
 Susan Willman, MD
 Mary Hinckley, MD
 Deborah Wachs, MD
 Carmelo Sgarlata, MD
 Evan Rosenbluth, MD
 Kristen Ivani, PhD



FERTILITY FACT SHEET

San Ramon / Orinda / San Jose

Adoption

Even with today's advanced reproductive technologies, not everyone who seeks treatment will become pregnant and deliver a child. Some will decide to pursue an adoption plan. This can be an emotionally difficult transition, so RSC has gathered some information which may assist you in making your decision.

Adoptions can be arranged independently or through public and private agencies. Domestic adoption usually involves an adoption attorney or other intermediary. Preparation is a very important part of a successful adoption. When forming a plan, consider your reasons for adoption and the characteristics of a child you would prefer (race, age, special needs). Consider the type of adoption you want to pursue (public or private agency, independent or international) and the degree of openness you want in the adoption. Read all the information you can about agencies, attorneys, support groups and laws. Attend seminars and pre-adoption meetings. Talk to those who have already been through the process. Adoption costs can vary widely. When consulting an adoption provider, ask for a written statement of all the fees along with an explanation of the costs. Research not only adoption practices and services but the pre and post adoption psychological issues as well.

Making the decision to adopt can be facilitated by consulting an experienced infertility/adoption counselor. Below is a list of some of the qualified therapists and service providers in the Bay Area. These names are from the RESOLVE referral list. RESOLVE is a National Infertility Association, established in 1974, as a non-profit organization with the only established, nationwide network of chapters mandated to promote reproductive health and to ensure equal access to all family building options for men and women experiencing infertility or other reproductive disorders. The mission of RESOLVE is to provide timely, compassionate support and information to people who are experiencing infertility and to increase awareness of infertility issues through public education and advocacy. Feel free to call the RESOLVE Helpline at 415-788-3002 for information and direction to a counselor who specializes in your particular focus. The listing of names does not imply the recommendation of any particular therapist or adoption provider. You may also visit them at www.resolve.org.

<p>Adoption Connection Agency 1710 Scott St San Francisco, CA 94115 415-359-2492 www.adoptionconnection.org</p>	<p>Jean Benward, LCSW Counselor 1800 Crow Canyon Ct, Suite 303 San Ramon, Ca 94583 925-820-9023</p>	<p>Adopt International Agency 1000 Brannan St, #301 San Francisco, CA 94103 415-934-0300 www.adoptinter.org</p>
--	--	--

Continued on reverse...

<p>Donald Crowe, PhD Psychologist 546 Miner Rd Orinda, CA 94563 925-386-0109</p>	<p>Madeline L Fiengold, PhD Psychologist Offices in Berkeley and Walnut Creek (510) 540-8715</p>	<p>Theresa Fleury, PhD Psychologist 510-540-8715</p>
<p>Melissa Holub, PhD Psychologist 2955 Shattuck Ave Berkeley, CA 94705 510-658-7119</p>	<p>Jewish Family & Children's Svcs 3272 California Street San Francisco, CA (415) 202-7497 www.adoptionconnection.org</p>	<p>Kim Kluger-Bell, MFT Counselor 1760 Solano Ave, Suite 300 Berkeley, Ca 94707 (510) 524-1475</p>
<p>Dianne Michelsen, MSW, JD Counselor and Attorney 3190 Old Tunnel Road Lafayette, CA 94549 925-945-1880 www.lodm.com</p>	<p>Beth Miller, MA Family Formation Consultant 510-654-4445 www.bethmiller.net</p>	<p>Peggy Orlin, MFT Counselor 510-528-2750</p>
<p>PACT An Adoption Alliance (specializes in children of color) 4179 Piedmont Ave, Suite 330 Oakland, CA 94611 (510) 243-9460 www.pactadopt.org</p>	<p>Roberta Rodriguez-Havens, Ed Adoption Educator/Consultant 817 Quarry Road, #D San Francisco, CA 94129 415-923-9228 rodriguezroberta@sbcglobal.net</p>	<p>Susan Romer, JD, PhD Attorney 1191 Church St San Francisco, CA 94114 415-643-4623 www.1-800-u-adopt-us.com</p>
<p>Ellen Roseman, BA Cooperative Adoption Consulting 54 Wellington Ave San Anselmo, CA 94960 415-453-2492 www.coopadopt.com</p>	<p>Jan Ruchlis, MFT Counselor 510-644-4205</p>	<p>Ellie Schwartzman, PhD Psychologist 510-869-1339</p>
<p>Shelley Tarnoff, JD, LMCFF Attorney 159 St James Dr Piedmont, CA 94611 510-549-4747 lawsmt@aol.com</p>	<p>Desmond B Tuck, JD Attorney 177 Bovet Road #600 San Mateo, CA 94402 650-341-1895 www.lawyers.com/tucklaw</p>	<p>Lynn Watkins, MFT Counselor 415-468-9023</p>